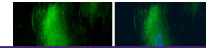

Product Datasheet

MTAP antibody (orb556585)

Description

Rabbit polyclonal antibody to MTAP


Species/Host

Rabbit

Reactivity

Human, Mouse

Conjugation

Unconjugated

Tested

ICC, IHC-P, IP, WB

Applications

Immunofluorescence analysis of HeLa cell...

Immunogen

Full length human MTAP Recombinant protein.

Target

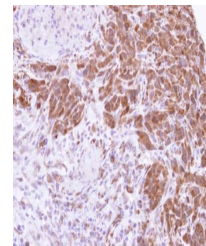
MTAP

Preservatives

0.025% ProClin 300. 1XPBS pH 7, 1% rAlbumin, 20% Glycerol

Form/Appearance

Liquid: 1XPBS, 20% Glycerol (pH7). 0.025% ProClin 300 was added as a preservative.



Immunohistochemical staining of SAS xenograft...

Concentration

1 mg/ml

Storage

Store as concentrated solution. Centrifuge briefly prior to opening vial. For short-term storage (1-2 weeks), store at 4°C. For long-term storage, aliquot and store at -20°C or below. Avoid multiple freeze-thaw cycles.

Note

For research use only

Application notes

Positive control: Mouse liver

Isotype

IgG

Clonality

Polyclonal

Purity

Purified by antigen-affinity chromatography.

MW

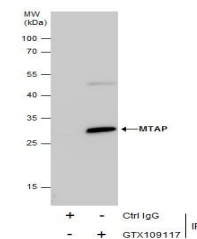
31

Uniprot ID
[Q13126](https://www.uniprot.org/entry/Q13126)
Dilution Range

WB: 1:500-1:3000. ICC/IF: 1:100-1:1000. IHC-P: 1:100-1:1000. IP: 1:100-1:500. *Optimal dilutions/concentrations should be determined by the researcher. Not tested in other applications.

Expiration Date

12 months from date of receipt.



Immunoprecipitation analysis of HeLa cells...