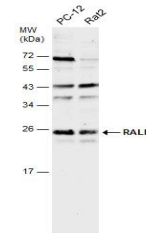


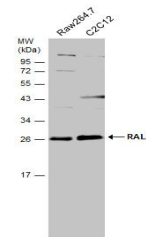
Product Datasheet

RALB antibody (orb556583)

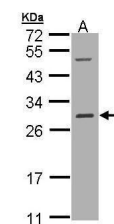
Description	Rabbit polyclonal antibody to RALB
Species/Host	Rabbit
Reactivity	Human, Mouse, Rat
Conjugation	Unconjugated
Tested Applications	WB
Immunogen	Full length human RALB Recombinant protein.
Target	RALB
Preservatives	0.01% Thimerosal. 0.1M Tris-Glycine (pH7), 10% Glycerol
Form/Appearance	Liquid: 0.1M Tris, 0.1M Glycine, 10% Glycerol (pH7). 0.01% Thimerosal was added as a preservative.
Concentration	0.71 mg/ml
Storage	Store as concentrated solution. Centrifuge briefly prior to opening vial. For short-term storage (1-2 weeks), store at 4°C. For long-term storage, aliquot and store at -20°C or below. Avoid multiple freeze-thaw cycles.
Note	For research use only
Application notes	Positive control: HepG2 , Raw264.7 , C2C12 , PC-12 , Rat2
Isotype	IgG
Clonality	Polyclonal
Purity	Purified by antigen-affinity chromatography.
MW	23
Uniprot ID	P11234
Dilution Range	WB: 1:500-1:3000
Expiration Date	12 months from date of receipt.



Western blot analysis of Various whole C...



Western blot analysis of Various whole C...



Western blot analysis of Hep G2 cells US...