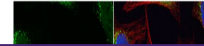

Product Datasheet

fibrinogen gamma chain Antibody (orb556554)

Description

Rabbit polyclonal antibody to Fibrinogen


Species/Host

Rabbit

Reactivity

Bovine, Human, Mouse, Rat

Conjugation

Unconjugated

Tested Applications

ICC, IHC-P, IP, WB

Immunogen

Recombinant protein encompassing a sequence within the center region of human Fibrinogen gamma. The exact sequence is proprietary.

Target

Fibrinogen gamma

Preservatives

0.025% ProClin 300, 1XPBS (pH7), 1% rAlbumin, 20% Glycerol

Form/Appearance

Liquid: 0.1M Tris, 0.1M Glycine, 10% Glycerol (pH7). 0.01% Thimerosal was added as a preservative.

Concentration

1 mg/ml

Storage

Store as concentrated solution. Centrifuge briefly prior to opening vial. For short-term storage (1-2 weeks), store at 4°C. For long-term storage, aliquot and store at -20°C or below. Avoid multiple freeze-thaw cycles.

Note

For research use only

Application notes

Positive control: rat plasma

Isotype

IgG

Clonality

Polyclonal

Purity

Purified by antigen-affinity chromatography.

MW

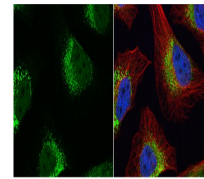
52

Uniprot ID
[P02679](https://www.uniprot.org/entry/P02679)
Dilution Range

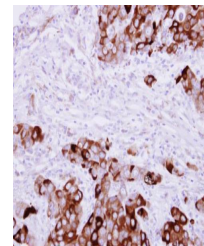
WB: 1:500-1:20000, IF: 1:100-1:1000, IHC-P: 1:100-1:1000, IP: 1:100-1:500

Expiration Date

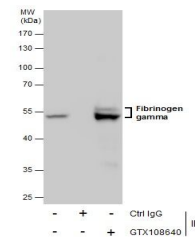
12 months from date of receipt.



Immunofluorescence analysis of HeLa cell...



Immunohistochemical staining of human br...



Immunoprecipitation analysis of HepG2 wh...