

---

## Product Datasheet

### CMTM6 antibody (orb556528)

**Description**

Rabbit polyclonal antibody to CMTM6

**Species/Host**

Rabbit

**Reactivity**

Human

**Conjugation**

Unconjugated

**Tested**

ICC, IHC-P, WB

**Applications**
**Immunogen**

Carrier-protein conjugated synthetic peptide encompassing a sequence within the C-terminus region of human CMTM6. The exact sequence is proprietary.

**Target**

CMTM6

**Preservatives**

0.025% ProClin 300, 1XPBS pH 7, 20% Glycerol

**Form/Appearance**

Liquid: 0.1M Tris, 0.1M Glycine, 10% Glycerol (pH7). 0.01% Thimerosal was added as a preservative.

**Concentration**

1 mg/ml

**Storage**

Store as concentrated solution. Centrifuge briefly prior to opening vial. For short-term storage (1-2 weeks), store at 4°C. For long-term storage, aliquot and store at -20°C or below. Avoid multiple freeze-thaw cycles.

**Note**

For research use only

**Application notes**

Positive control: Raji, NCI-H929

**Isotype**

IgG

**Clonality**

Polyclonal

**Purity**

Purified by antigen-affinity chromatography.

**MW**

20

**Uniprot ID**
[Q9NX76](#)
**Dilution Range**

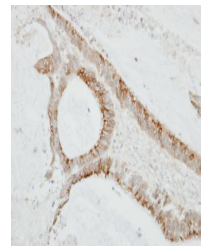
WB: 1:500-1:3000, IF: 1:100-1:1000, IHC-P: 1:100-1:1000

**Expiration Date**

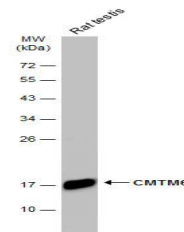
12 months from date of receipt.



Immunofluorescence analysis of A431 cell...



Immunohistochemical staining of TW2.6 xe...



Western blot analysis of Rat tissue usin...