
Product Datasheet

glutathione S-transferase alpha 1 Antibody (orb556476)

Description

Rabbit polyclonal antibody to GSTA1


Species/Host

Rabbit

Reactivity

Human, Mouse

Conjugation

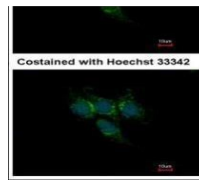
Unconjugated

Tested Applications

ICC, IHC-P, WB

Immunogen

Recombinant protein corresponding to human GSTA1



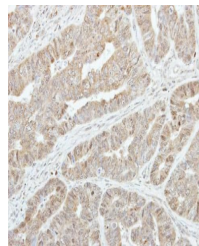
Immunofluorescence analysis of Hep3B cel...

Target

GSTA1

Preservatives

0.01% Thimerosal. 0.1M Tris-Glycine (pH7), 10% Glycerol



Immunohistochemical staining of human CO...

Form/Appearance

Liquid: 0.1M Tris, 0.1M Glycine, 10% Glycerol (pH7). 0.01% Thimerosal was added as a preservative.

Concentration

6 mg/ml

Storage

Store as concentrated solution. Centrifuge briefly prior to opening vial. For short-term storage (1-2 weeks), store at 4°C. For long-term storage, aliquot and store at -20°C or below. Avoid multiple freeze-thaw cycles.

Note

For research use only

Application notes

Positive control: mouse liver , HepG2

Isotype

IgG

Clonality

Polyclonal

Purity

Affinity purified by Protein A.

MW

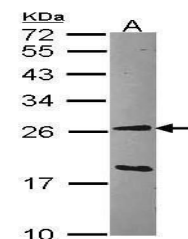
26

Uniprot ID
[P08263](https://www.uniprot.org/uniprot/P08263)
Dilution Range

WB: 1:1000-1:10000 , IF: 1:100-1:1000 , IHC-P: 1:100-1:1000

Expiration Date

12 months from date of receipt.



Western blot analysis of Hep G2 cells us...