
Product Datasheet

HS1BP3 antibody (orb556444)

Description

Rabbit polyclonal antibody to HS1BP3


Species/Host

Rabbit

Reactivity

Human, Zebrafish

Conjugation

Unconjugated

Tested

ICC, IHC-P, WB

Applications

Immunohistochemical staining of Cal27 Xe...

Immunogen

Carrier-protein conjugated synthetic peptide encompassing a sequence within the C-terminus region of human HS1BP3. The exact sequence is proprietary.

Target

HS1BP3

Preservatives

0.01% Thimerosal. 0.1M Tris-Glycine (pH7), 10% Glycerol

Form/Appearance

Liquid: 0.1M Tris, 0.1M Glycine, 10% Glycerol (pH7). 0.01% Thimerosal was added as a preservative.

Concentration

1 mg/ml

Storage

Store as concentrated solution. Centrifuge briefly prior to opening vial. For short-term storage (1-2 weeks), store at 4°C. For long-term storage, aliquot and store at -20°C or below. Avoid multiple freeze-thaw cycles.

Note

For research use only

Application notes

Positive control: Molt-4

Isotype

IgG

Clonality

Polyclonal

Purity

Purified by antigen-affinity chromatography.

MW

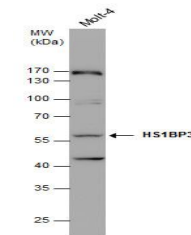
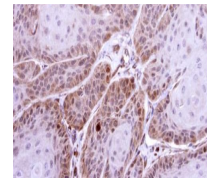
43

Uniprot ID
[Q53T59](https://www.uniprot.org/uniprot/Q53T59)
Dilution Range

WB: 1:5000-1:20000 , IHC-P: 1:100-1:1000

Expiration Date

12 months from date of receipt.



Western blot analysis of Whole cell extr...