
Product Datasheet

glycerol kinase 5 Antibody (orb556430)

Description

Rabbit polyclonal antibody to GK5


Species/Host

Rabbit

Reactivity

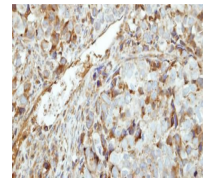
Human

Conjugation

Unconjugated

Tested Applications

IHC-P, WB



Immunohistochemical staining of CL1-0 xe...

Immunogen

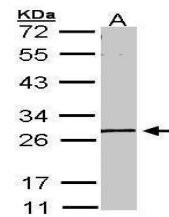
Recombinant protein encompassing a sequence within the center region of human GK5. The exact sequence is proprietary.

Target

GK5

Preservatives

0.01% Thimerosal. 0.1M Tris-Glycine (pH7), 10% Glycerol



Western blot analysis of A431 cells usin...

Form/Appearance

Liquid: 0.1M Tris, 0.1M Glycine, 10% Glycerol (pH7). 0.01% Thimerosal was added as a preservative.

Concentration

0.74 mg/ml

Storage

Store as concentrated solution. Centrifuge briefly prior to opening vial. For short-term storage (1-2 weeks), store at 4°C. For long-term storage, aliquot and store at -20°C or below. Avoid multiple freeze-thaw cycles.

Note

For research use only

Application notes

Positive control: A431

Isotype

IgG

Clonality

Polyclonal

Purity

Purified by antigen-affinity chromatography.

MW

59

Uniprot ID
[Q6ZS86](https://www.uniprot.org/uniprot/Q6ZS86)
Dilution Range

WB: 1:500-1:3000 , IHC-P: 1:100-1:1000

Expiration Date

12 months from date of receipt.