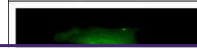

Product Datasheet

basic leucine zipper and W2 domains 2 Antibody (orb556398)

Description

Rabbit polyclonal antibody to BZW2


Species/Host

Rabbit

Reactivity

Human, Mouse, Rat

Conjugation

Unconjugated

Tested

ICC, IHC-P, WB

Applications

Immunofluorescence analysis of HeLa cell...

Immunogen

Recombinant protein encompassing a sequence within the center region of human BZW2. The exact sequence is proprietary.

Target

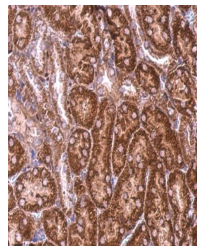
BZW2

Preservatives

0.01% Thimerosal. 0.1M Tris-Glycine (pH7), 10% Glycerol

Form/Appearance

Liquid: 0.1M Tris, 0.1M Glycine, 10% Glycerol (pH7). 0.01% Thimerosal was added as a preservative.



Immunohistochemical staining of mouse ki...

Concentration

0.57 mg/ml

Storage

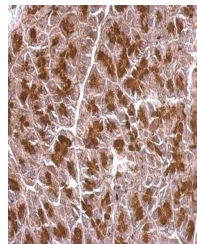
Store as concentrated solution. Centrifuge briefly prior to opening vial. For short-term storage (1-2 weeks), store at 4°C. For long-term storage, aliquot and store at -20°C or below. Avoid multiple freeze-thaw cycles.

Note

For research use only

Application notes

Positive control: Neuro2A , C8D30 , Rat2 , A431 , HeLaS3 , Molt-4



Immunohistochemical staining of mouse pa...

Isotype

IgG

Clonality

Polyclonal

Purity

Purified by antigen-affinity chromatography.

MW

48

Uniprot ID
[Q9Y6E2](#)
Dilution Range

WB: 1:500-1:3000 , IF: 1:100-1:1000 , IHC-P: 1:100-1:1000

Expiration Date

12 months from date of receipt.