

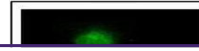
---

## Product Datasheet

### MMACHC antibody (orb556388)

**Description**

Rabbit polyclonal antibody to MMACHC


**Species/Host**

Rabbit

**Reactivity**

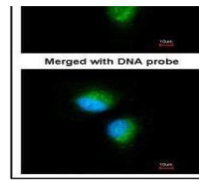
Human, Mouse, Rat

**Conjugation**

Unconjugated

**Tested Applications**

ICC, IHC-P, WB



Immunofluorescence analysis of HeLa cell...

**Immunogen**

Recombinant protein encompassing a sequence within the center region of human MMACHC. The exact sequence is proprietary.

**Target**

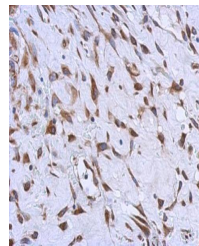
MMACHC

**Preservatives**

0.01% Thimerosal. 0.1M Tris-Glycine (pH7), 10% Glycerol

**Form/Appearance**

Liquid: 0.1M Tris, 0.1M Glycine, 10% Glycerol (pH7). 0.01% Thimerosal was added as a preservative.



Immunohistochemical staining of human he...

**Concentration**

1 mg/ml

**Storage**

Store as concentrated solution. Centrifuge briefly prior to opening vial. For short-term storage (1-2 weeks), store at 4°C. For long-term storage, aliquot and store at -20°C or below. Avoid multiple freeze-thaw cycles.

**Note**

For research use only

**Isotype**

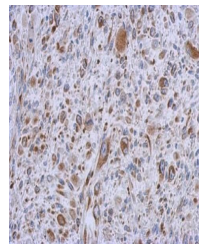
IgG

**Clonality**

Polyclonal

**Purity**

Purified by antigen-affinity chromatography.



Immunohistochemical staining of C2C12 xe...

**MW**

32

**Uniprot ID**
[Q9Y4U1](https://www.uniprot.org/uniprot/Q9Y4U1)
**Dilution Range**

WB: 1:500-1:3000 , IF: 1:100-1:1000 , IHC-P: 1:100-1:1000

**Expiration Date**

12 months from date of receipt.