

---

## Product Datasheet

### Sec61 translocon alpha 1 subunit Antibody (orb556360)

**Description**

Rabbit polyclonal antibody to SEC61A1


**Species/Host**

Rabbit

**Reactivity**

Human

**Conjugation**

Unconjugated

**Tested**

ICC, IHC-P, WB

**Applications**
**Immunogen**

Carrier-protein conjugated synthetic peptide encompassing a sequence within the C-terminus region of human SEC61A1. The exact sequence is proprietary.

**Target**

SEC61A1

**Preservatives**

0.025% ProClin 300. 1XPBS (pH7), 20% Glycerol

**Form/Appearance**

Liquid: 1XPBS, 20% Glycerol (pH7). 0.025% ProClin 300 was added as a preservative.

**Concentration**

0.15 mg/ml

**Storage**

Store as concentrated solution. Centrifuge briefly prior to opening vial. For short-term storage (1-2 weeks), store at 4°C. For long-term storage, aliquot and store at -20°C or below. Avoid multiple freeze-thaw cycles.

**Note**

For research use only

**Application notes**

Positive control: K562 membrane fraction extract (un-boiled)

**Isotype**

IgG

**Clonality**

Polyclonal

**Purity**

Purified by antigen-affinity chromatography.

**MW**

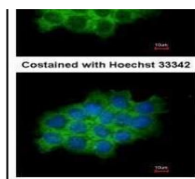
52

**Uniprot ID**
**P61619**
**Dilution Range**

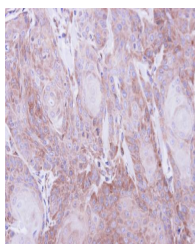
WB: 1:500-1:3000 , IF: 1:100-1:1000 , IHC-P: 1:100-1:1000

**Expiration Date**

12 months from date of receipt.



Immunofluorescence analysis of A431 cell...



Immunohistochemical staining of Cal27 Xe...