
Product Datasheet

GIPC PDZ domain containing family member 1 Antibody (orb556348)

Description

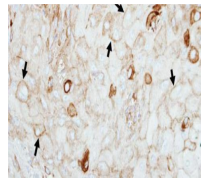
Rabbit polyclonal antibody to GIPC1


Species/Host

Rabbit

Reactivity

Human, Mouse



Immunohistochemical staining of SCC4 xen...

Conjugation

Unconjugated

Tested Applications

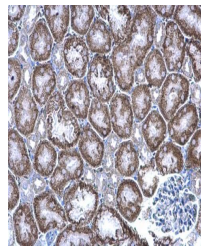
IHC-P, WB

Applications
Immunogen

Carrier-protein conjugated synthetic peptide encompassing a sequence within the C-terminus region of human GIPC1. The exact sequence is proprietary.

Target

GIPC1



Immunohistochemical staining of mouse ki...

Preservatives

0.01% Thimerosal. 0.1M Tris-Glycine (pH7), 10% Glycerol

Form/Appearance

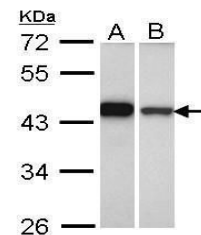
Liquid: 0.1M Tris, 0.1M Glycine, 10% Glycerol (pH7). 0.01% Thimerosal was added as a preservative.

Concentration

0.47 mg/ml

Storage

Store as concentrated solution. Centrifuge briefly prior to opening vial. For short-term storage (1-2 weeks), store at 4°C. For long-term storage, aliquot and store at -20°C or below. Avoid multiple freeze-thaw cycles.



Western blot analysis of A431(Lane 1), H...

Note

For research use only

Application notes

Positive control: A431 , HeLa

Isotype

IgG

Clonality

Polyclonal

Purity

Purified by antigen-affinity chromatography.

MW

36

Uniprot ID
[O14908](https://www.uniprot.org/entry/O14908)
Dilution Range

WB: 1:500-1:3000 , IHC-P: 1:100-1:1000

Expiration Date

12 months from date of receipt.