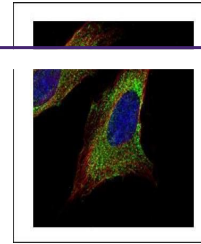
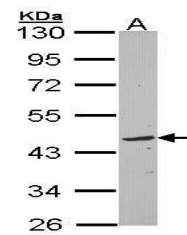

Product Datasheet

TOM1L1 antibody (orb556347)

Description	Rabbit polyclonal antibody to TOM1L1
Species/Host	Rabbit
Reactivity	Human
Conjugation	Unconjugated
Tested Applications	ICC, WB
Immunogen	Carrier-protein conjugated synthetic peptide encompassing a sequence within the C-terminus region of human TOM1L1. The exact sequence is proprietary.
Target	TOM1L1
Preservatives	0.01% Thimerosal. 1XPBS (pH7), 10% Glycerol
Form/Appearance	Liquid: 1XPBS, 10% Glycerol (pH7). 0.01% Thimerosal was added as a preservative.
Concentration	0.8 mg/ml
Storage	Store as concentrated solution. Centrifuge briefly prior to opening vial. For short-term storage (1-2 weeks), store at 4°C. For long-term storage, aliquot and store at -20°C or below. Avoid multiple freeze-thaw cycles.
Note	For research use only
Application notes	Positive control: Raji , TOM1L1-transfected 293T
Isotype	IgG
Clonality	Polyclonal
Purity	Purified by antigen-affinity chromatography.
MW	53
Uniprot ID	O75674
Dilution Range	WB: 1:1000-1:10000 , IF: 1:100-1:1000
Expiration Date	12 months from date of receipt.



Immunofluorescence analysis of HeLa cell...



Western blot analysis of Raji cells using...