
Product Datasheet

PHEX antibody (orb556303)

Description

Rabbit polyclonal antibody to PHEX

Species/Host

Rabbit

Reactivity

Human

Conjugation

Unconjugated

Tested

WB

Applications
Immunogen

Recombinant protein encompassing a sequence within the center region of human PHEX. The exact sequence is proprietary.

Target

PHEX

Preservatives

0.01% Thimerosal. 0.1M Tris-Glycine (pH7), 10% Glycerol

Form/Appearance

Liquid: 0.1M Tris, 0.1M Glycine, 10% Glycerol (pH7). 0.01% Thimerosal was added as a preservative.

Concentration

0.99 mg/ml

Storage

Store as concentrated solution. Centrifuge briefly prior to opening vial. For short-term storage (1-2 weeks), store at 4°C. For long-term storage, aliquot and store at -20°C or below. Avoid multiple freeze-thaw cycles.

Note

For research use only

Application notes

Positive control: Molt-4

Isotype

IgG

Clonality

Polyclonal

Purity

Purified by antigen-affinity chromatography.

MW

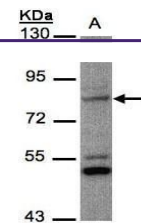
86

Uniprot ID
[P78562](#)
Dilution Range

WB: 1:500-1:3000

Expiration Date

12 months from date of receipt.



Western blot analysis of MOLT4 cells using...