
Product Datasheet

calsequestrin 2 Antibody (orb556295)

Description

Rabbit polyclonal antibody to Calsequestrin 2


Species/Host

Rabbit

Reactivity

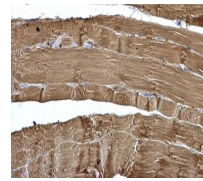
Human, Mouse

Conjugation

Unconjugated

Tested

IHC-P, WB

Applications


Immunohistochemical staining of mouse mu...

Immunogen

Recombinant protein encompassing a sequence within the center region of human Calsequestrin-2. The exact sequence is proprietary.

Target

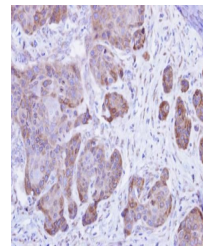
Calsequestrin 2

Preservatives

0.01% Thimerosal. 0.1M Tris-Glycine (pH7), 10% Glycerol

Form/Appearance

Liquid: 0.1M Tris, 0.1M Glycine, 10% Glycerol (pH7). 0.01% Thimerosal was added as a preservative.



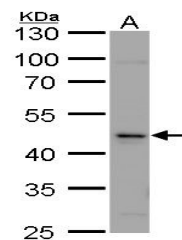
Immunohistochemical staining of Cal27 Xe...

Concentration

0.68 mg/ml

Storage

Store as concentrated solution. Centrifuge briefly prior to opening vial. For short-term storage (1-2 weeks), store at 4°C. For long-term storage, aliquot and store at -20°C or below. Avoid multiple freeze-thaw cycles.



Western blot analysis of HCT116 cell usi...

Note

For research use only

Application notes

Positive control: HCT116

Isotype

IgG

Clonality

Polyclonal

Purity

Purified by antigen-affinity chromatography.

MW

46

Uniprot ID
[O14958](https://www.uniprot.org/uniprot/O14958)
Dilution Range

WB: 1:500-1:3000 , IHC-P: 1:100-1:1000

Expiration Date

12 months from date of receipt.