

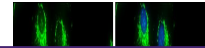
---

## Product Datasheet

### malate dehydrogenase 2 Antibody (orb556289)

**Description**

Rabbit polyclonal antibody to MDH2


**Species/Host**

Rabbit

**Reactivity**

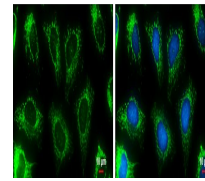
Human, Mouse, Rat

**Conjugation**

Unconjugated

**Tested**

ICC, IHC-P, WB

**Applications**


Immunofluorescence analysis of HeLa cell...

**Immunogen**

Recombinant protein encompassing a sequence within the center region of human MDH2. The exact sequence is proprietary.

**Target**

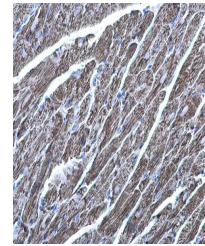
MDH2

**Preservatives**

0.025% ProClin 300, 1XPBS (pH7), 1% rAlbumin, 20% Glycerol

**Form/Appearance**

Liquid: 1XPBS, 1% rAlbumin, 20% Glycerol (pH7). 0.025% ProClin 300 was added as a preservative.



Immunohistochemical staining of mouse he...

**Concentration**

0.38 mg/ml

**Storage**

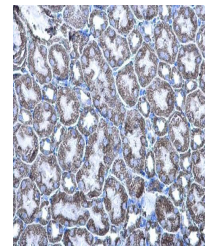
Store as concentrated solution. Centrifuge briefly prior to opening vial. For short-term storage (1-2 weeks), store at 4°C. For long-term storage, aliquot and store at -20°C or below. Avoid multiple freeze-thaw cycles.

**Note**

For research use only

**Application notes**

Positive control: Mouse brain, rat lung, 293T, A431, HeLa, HepG2



Immunohistochemical staining of mouse ki...

**Isotype**

IgG

**Clonality**

Polyclonal

**Purity**

Purified by antigen-affinity chromatography.

**MW**

36

**Uniprot ID**
[P40926](https://www.uniprot.org/uniprot/P40926)
**Dilution Range**

WB: 1:500-1:20000, IF: 1:100-1:1000, IHC-P: 1:100-1:1000

**Expiration Date**

12 months from date of receipt.