

---

## Product Datasheet

### BCL2 like 1 Antibody (orb556264)

**Description**

Rabbit polyclonal antibody to Bcl-X

**Species/Host**

Rabbit

**Reactivity**

Canine, Human, Mouse, Rat

**Conjugation**

Unconjugated

**Tested**

ICC, IHC-P, IP, WB

**Applications**
**Immunogen**

Recombinant protein encompassing a sequence within the center region of human Bcl-X. The exact sequence is proprietary.

**Target**

Bcl-X

**Preservatives**

0.025% ProClin 300. 1XPBS pH 7, 1% rAlbumin, 20% Glycerol

**Form/Appearance**

Liquid: 0.1M Tris, 0.1M Glycine, 10% Glycerol (pH7). 0.01% Thimerosal was added as a preservative.

**Concentration**

0.95 mg/ml

**Storage**

Store as concentrated solution. Centrifuge briefly prior to opening vial. For short-term storage (1-2 weeks), store at 4°C. For long-term storage, aliquot and store at -20°C or below. Avoid multiple freeze-thaw cycles.

**Note**

For research use only

**Application notes**

Positive control: NIH-3T3 , PC-12

**Isotype**

IgG

**Clonality**

Polyclonal

**Purity**

Purified by antigen-affinity chromatography.

**MW**

26

**Uniprot ID**

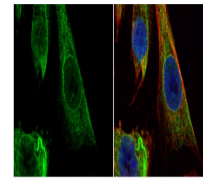
[Q07817](#)

**Dilution Range**

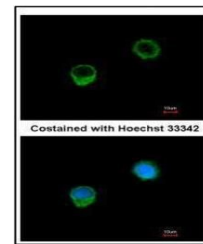
WB: 1:500-1:3000 , IF: 1:100-1:1000 , IHC-P: 1:100-1:1000 , IP: 1:100-1:500

**Expiration Date**

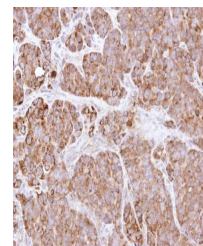
12 months from date of receipt.



Immunofluorescence analysis of SK-N-SH cells.



Immunofluorescence analysis of A549 cells.



Immunohistochemical staining of SW480 cells.