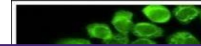

Product Datasheet

Complement C2 antibody (orb556248)

Description

Rabbit polyclonal antibody to Complement C2


Species/Host

Rabbit

Reactivity

Human

Conjugation

Unconjugated

Tested

ICC, WB

Applications
Immunogen

Recombinant protein encompassing a sequence within the center region of human Complement C2. The exact sequence is proprietary.

Target

Complement C2

Preservatives

0.01% Thimerosal. 0.1M Tris-Glycine (pH7), 10% Glycerol

Form/Appearance

Liquid: 0.1M Tris, 0.1M Glycine, 10% Glycerol (pH7). 0.01% Thimerosal was added as a preservative.

Concentration

1 mg/ml

Storage

Store as concentrated solution. Centrifuge briefly prior to opening vial. For short-term storage (1-2 weeks), store at 4°C. For long-term storage, aliquot and store at -20°C or below. Avoid multiple freeze-thaw cycles.

Note

For research use only

Application notes

Positive control: 293T , A431 , H1299 , HeLaS3 , HepG2 , Molt-4 , Raji

Isotype

IgG

Clonality

Polyclonal

Purity

Purified by antigen-affinity chromatography.

MW

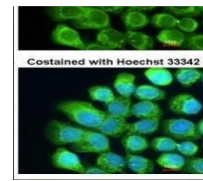
83

Uniprot ID
[P06681](https://www.uniprot.org/uniprot/P06681)
Dilution Range

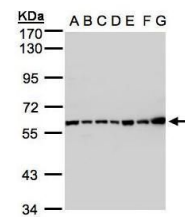
WB: 1:500-1:3000 , IF: 1:100-1:1000

Expiration Date

12 months from date of receipt.



Immunofluorescence analysis of A431 cell...



Western blot analysis of 293T(Lane 1), A...