

Product Datasheet

C1 inhibitor antibody (orb556244)

Description

Rabbit polyclonal antibody to C1 inhibitor


Species/Host

Rabbit

Reactivity

Bovine, Human, Mouse, Rat

Conjugation

Unconjugated

Tested Applications

IHC, IHC-P, WB

Immunogen

Recombinant protein encompassing a sequence within the center region of human C1 inhibitor. The exact sequence is proprietary.

Target

C1 inhibitor

Preservatives

0.025% ProClin 300, 1XPBS (pH7), 20% Glycerol

Form/Appearance

Liquid: 0.1M Tris, 0.1M Glycine, 10% Glycerol (pH7). 0.01% Thimerosal was added as a preservative.

Concentration

1 mg/ml

Storage

Store as concentrated solution. Centrifuge briefly prior to opening vial. For short-term storage (1-2 weeks), store at 4°C. For long-term storage, aliquot and store at -20°C or below. Avoid multiple freeze-thaw cycles.

Note

For research use only

Isotype

IgG

Clonality

Polyclonal

Purity

Purified by antigen-affinity chromatography.

MW

55

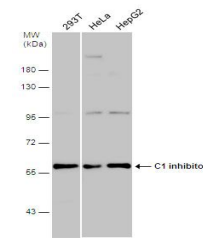
Uniprot ID
[P05155](https://www.uniprot.org/uniprot/P05155)
Dilution Range

WB: 1:500-1:10000, IHC-P: 1:100-1:1000

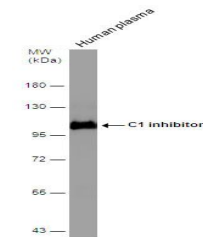
Expiration Date

12 months from date of receipt.

Immunohistochemical staining of A549 xen...



Western blot analysis of Various whole c...



Western blot analysis of Human tissue us...