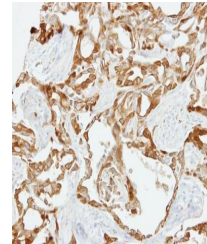


Product Datasheet

fibulin 2 Antibody (orb556232)

Description	Rabbit polyclonal antibody to Fibulin 2
Species/Host	Rabbit
Reactivity	Human, Mouse, Rat
Conjugation	Unconjugated
Tested Applications	IHC-P, WB
Immunogen	Recombinant protein encompassing a sequence within the N-terminus region of human Fibulin 2. The exact sequence is proprietary.
Target	Fibulin 2
Preservatives	0.025% ProClin 300. 1XPBS pH 7, 20% Glycerol
Form/Appearance	Liquid: 1XPBS, 1% rAlbumin, 20% Glycerol (pH7). 0.025% ProClin 300 was added as a preservative.
Concentration	0.22 mg/ml
Storage	Store as concentrated solution. Centrifuge briefly prior to opening vial. For short-term storage (1-2 weeks), store at 4°C. For long-term storage, aliquot and store at -20°C or below. Avoid multiple freeze-thaw cycles.
Note	For research use only
Isotype	IgG
Clonality	Polyclonal
Purity	Purified by antigen-affinity chromatography.
MW	127
Uniprot ID	P98095
Dilution Range	WB: 1:500-1:3000 , IHC-P: 1:100-1:1000
Expiration Date	12 months from date of receipt.



Immunohistochemical staining of H661 xen...