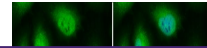

Product Datasheet

lysyl oxidase like 2 Antibody (orb556231)

Description

Rabbit polyclonal antibody to LOXL2


Species/Host

Rabbit

Reactivity

Human, Mouse

Conjugation

Unconjugated

Tested

ELISA, ICC, IHC, IHC-P, WB

Applications
Immunogen

Recombinant protein encompassing a sequence within the center region of human LOXL2. The exact sequence is proprietary.

Target

LOXL2

Preservatives

0.025% ProClin 300, 1XPBS, 20% Glycerol (pH7)

Form/Appearance

Liquid: 1XPBS, 1% rAlbumin, 20% Glycerol (pH7). 0.025% ProClin 300 was added as a preservative.

Concentration

0.36 mg/ml

Storage

Store as concentrated solution. Centrifuge briefly prior to opening vial. For short-term storage (1-2 weeks), store at 4°C. For long-term storage, aliquot and store at -20°C or below. Avoid multiple freeze-thaw cycles.

Note

For research use only

Application notes

Positive control: U87-MG, SK-N-SH, SK-N-AS, 293T transfected with LOXL2

Isotype

IgG

Clonality

Polyclonal

Purity

Purified by antigen-affinity chromatography.

MW

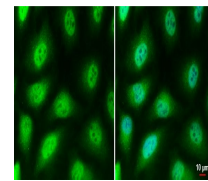
87

Uniprot ID
[Q9Y4K0](#)
Dilution Range

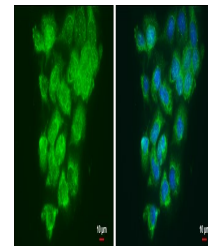
WB: 1:500-1:3000, IF: 1:100-1:1000, IHC-P: 1:100-1:1000

Expiration Date

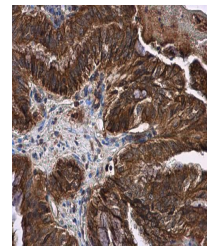
12 months from date of receipt.



Immunofluorescence analysis of HeLa cell...



Immunofluorescence analysis of A431 cell...



Immunohistochemical staining of human ce...