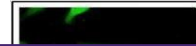

Product Datasheet

ribosomal protein S3A Antibody (orb556224)

Description

Rabbit polyclonal antibody to RPS3A


Species/Host

Rabbit

Reactivity

Human, Mouse, Rat

Conjugation

Unconjugated

Tested

ICC, IHC-P, IP, WB

Applications
Immunogen

Recombinant protein encompassing a sequence within the center region of human RPS3A. The exact sequence is proprietary.

Target

RPS3A

Preservatives

0.01% Thimerosal. 0.1M Tris-Glycine (pH7), 10% Glycerol

Form/Appearance

Liquid: 0.1M Tris, 0.1M Glycine, 10% Glycerol (pH7). 0.01% Thimerosal was added as a preservative.

Concentration

1 mg/ml

Storage

Store as concentrated solution. Centrifuge briefly prior to opening vial. For short-term storage (1-2 weeks), store at 4°C. For long-term storage, aliquot and store at -20°C or below. Avoid multiple freeze-thaw cycles.

Note

For research use only

Application notes

Positive control: 293T , A431 , H1299 , HeLaS3 , HepG2 , Molt-4 , Raji , PC-12 , Rat2 , Neuro2A , GL261 , C8D30 , NIH-3T3 , BCL-1 , Raw264.7 , C2C12

Isotype

IgG

Clonality

Polyclonal

Purity

Purified by antigen-affinity chromatography.

MW

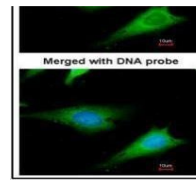
30

Uniprot ID
[P61247](https://www.uniprot.org/protein/P61247)
Dilution Range

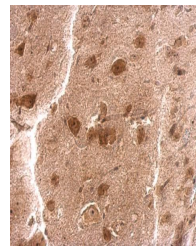
WB: 1:500-1:3000 , IF: 1:100-1:1000 , IHC-P: 1:100-1:1000

Expiration Date

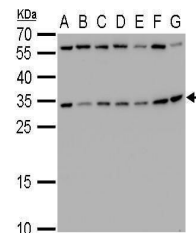
12 months from date of receipt.



Immunofluorescence analysis of HeLa cell...



Immunohistochemical staining of mouse br...



Western blot analysis of 293T(Lane 1), A...