
Product Datasheet

**solute carrier family 26 member 8 Antibody
(orb556223)**

Description

Rabbit polyclonal antibody to SLC26A8


Species/Host

Rabbit

Reactivity

Human

Conjugation

Unconjugated

Tested Applications

IHC-P, WB

Immunogen

Recombinant protein encompassing a sequence within the C-terminus region of human SLC26A8. The exact sequence is proprietary.

Target

SLC26A8

Preservatives

0.01% Thimerosal, 1XPBS (pH7), 1% rAlbumin, 20% Glycerol

Form/Appearance

Liquid: 1XPBS, 1% rAlbumin, 20% Glycerol (pH7). 0.01% Thimerosal was added as a preservative.

Concentration

0.83 mg/ml

Storage

Store as concentrated solution. Centrifuge briefly prior to opening vial. For short-term storage (1-2 weeks), store at 4°C. For long-term storage, aliquot and store at -20°C or below. Avoid multiple freeze-thaw cycles.

Note

For research use only

Application notes

Positive control: Molt-4

Isotype

IgG

Clonality

Polyclonal

Purity

Purified by antigen-affinity chromatography.

MW

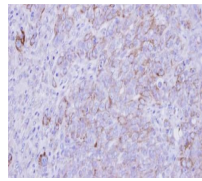
109

Uniprot ID
[Q96RN1](https://www.uniprot.org/uniprot/Q96RN1)
Dilution Range

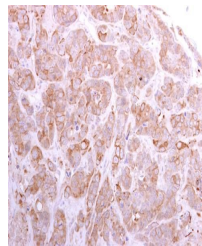
WB: 1:500-1:3000 , IHC-P: 1:100-1:1000

Expiration Date

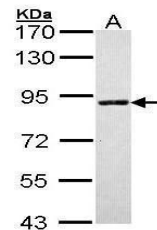
12 months from date of receipt.



Immunohistochemical staining of DLD-1 xenograft.



Immunohistochemical staining of MCF7 xenograft.



Western blot analysis of Molt-4 cells.