
Product Datasheet

MAD2L1 antibody (orb556193)

Description

Rabbit polyclonal antibody to MAD2L1

Species/Host

Rabbit

Reactivity

Human, Rat

Conjugation

Unconjugated

Tested Applications

ICC, IHC-P, IP, WB

Immunogen

Carrier-protein conjugated synthetic peptide encompassing a sequence within the C-terminus region of human MAD2L1. The exact sequence is proprietary.

Target

MAD2L1

Preservatives

0.025% ProClin 300, 1XPBS pH 7, 20% Glycerol

Form/Appearance

Liquid: 1XPBS, 40% Glycerol (pH7). 0.01% Thimerosal was added as a preservative.

Concentration

1 mg/ml

Storage

Store as concentrated solution. Centrifuge briefly prior to opening vial. For short-term storage (1-2 weeks), store at 4°C. For long-term storage, aliquot and store at -20°C or below. Avoid multiple freeze-thaw cycles.

Note

For research use only

Application notes

Positive control: HepG2, Molt-4, Raji, 293T

Isotype

IgG

Clonality

Polyclonal

Purity

Purified by antigen-affinity chromatography.

MW

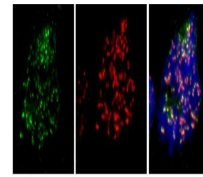
24

Uniprot ID
[Q13257](https://www.uniprot.org/uniprot/Q13257)
Dilution Range

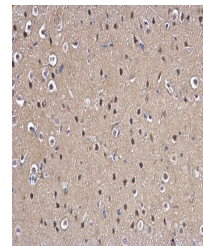
WB: 1:500-1:3000, IF: 1:100-1:1000, IHC-P: 1:100-1:1000, IP: 1:100-1:500

Expiration Date

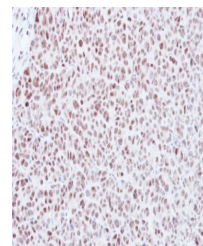
12 months from date of receipt.

 Merged with
Mab2 ACA DAPI


Immunofluorescence analysis of U2OS cell...



Immunohistochemical staining of rat fore...



Immunohistochemical staining of DLD-1 xe...