

---

## Product Datasheet

### DDAH1 antibody (orb556190)

**Description**

Rabbit polyclonal antibody to DDAH1

**Species/Host**

Rabbit

**Reactivity**

Human, Mouse

**Conjugation**

Unconjugated

**Tested Applications**

ICC, WB

**Immunogen**

Carrier-protein conjugated synthetic peptide encompassing a sequence within the C-terminus region of human DDAH1. The exact sequence is proprietary.

**Target**

DDAH1

**Preservatives**

0.01% Thimerosal. 1XPBS (pH7), 10% Glycerol

**Form/Appearance**

Liquid: 1XPBS, 10% Glycerol (pH7). 0.01% Thimerosal was added as a preservative.

**Concentration**

0.45 mg/ml

**Storage**

Store as concentrated solution. Centrifuge briefly prior to opening vial. For short-term storage (1-2 weeks), store at 4°C. For long-term storage, aliquot and store at -20°C or below. Avoid multiple freeze-thaw cycles.

**Note**

For research use only

**Application notes**

Positive control: Raji , mouse kidney

**Isotype**

IgG

**Clonality**

Polyclonal

**Purity**

Purified by antigen-affinity chromatography.

**MW**

31

**Uniprot ID**
[O94760](https://www.uniprot.org/entry/O94760)
**Dilution Range**

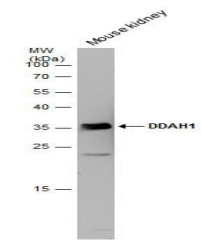
WB: 1:500-1:3000 , IF: 1:100-1:1000

**Expiration Date**

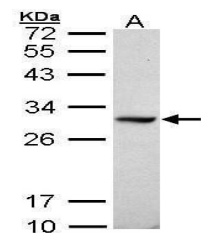
12 months from date of receipt.



Immunofluorescence analysis of HCT116 ce...



Western blot analysis of Mouse tissue us...



Western blot analysis of Raji cells usin...