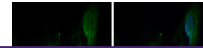

Product Datasheet

CLPP antibody (orb556189)

Description

Rabbit polyclonal antibody to CLPP


Species/Host

Rabbit

Reactivity

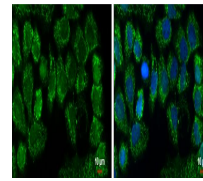
Human

Conjugation

Unconjugated

Tested

ICC, IHC-P, WB

Applications


Immunofluorescence analysis of A431 cell...

Immunogen

Carrier-protein conjugated synthetic peptide encompassing a sequence within the C-terminus region of human CLPP. The exact sequence is proprietary.

Target

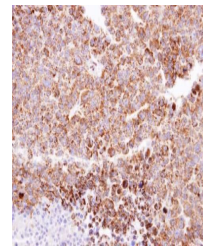
CLPP

Preservatives

0.01% Thimerosal. 1XPBS (pH7), 10% Glycerol

Form/Appearance

Liquid: 1XPBS, 10% Glycerol (pH7). 0.01% Thimerosal was added as a preservative.



Immunohistochemical staining of H520 xen...

Concentration

1 mg/ml

Storage

Store as concentrated solution. Centrifuge briefly prior to opening vial. For short-term storage (1-2 weeks), store at 4°C. For long-term storage, aliquot and store at -20°C or below. Avoid multiple freeze-thaw cycles.

Note

For research use only

Application notes

Positive control: Jurkat , Raji , NCI-H929 , 293T

Isotype

IgG

Clonality

Polyclonal

Purity

Purified by antigen-affinity chromatography.

MW

30

Uniprot ID
[Q16740](https://www.uniprot.org/entry/Q16740)
Dilution Range

WB: 1:500-1:3000 , IF: 1:100-1:1000 , IHC-P: 1:100-1:1000

Expiration Date

12 months from date of receipt.

