

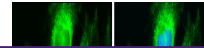
---

## Product Datasheet

### SDHB antibody (orb556185)

**Description**

Rabbit polyclonal antibody to SDHB


**Species/Host**

Rabbit

**Reactivity**

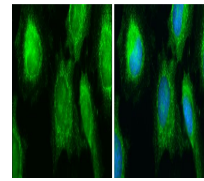
Human, Mouse

**Conjugation**

Unconjugated

**Tested**

ICC, IHC-P, WB

**Applications**


Immunofluorescence analysis of HeLa cell...

**Immunogen**

Carrier-protein conjugated synthetic peptide encompassing a sequence within the C-terminus region of human SDHB. The exact sequence is proprietary.

**Target**

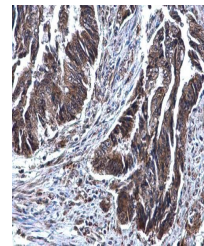
SDHB

**Preservatives**

0.01% Thimerosal. 1XPBS (pH7), 40% Glycerol

**Form/Appearance**

Liquid: 1XPBS, 40% Glycerol (pH7). 0.01% Thimerosal was added as a preservative.



Immunohistochemical staining of human CO...

**Concentration**

1 mg/ml

**Storage**

Store as concentrated solution. Centrifuge briefly prior to opening vial. For short-term storage (1-2 weeks), store at 4°C. For long-term storage, aliquot and store at -20°C or below. Avoid multiple freeze-thaw cycles.

**Note**

For research use only

**Application notes**

Positive control: THP-1 , NCI-H929 , Neuro2A

**Isotype**

IgG

**Clonality**

Polyclonal

**Purity**

Purified by antigen-affinity chromatography.

**MW**

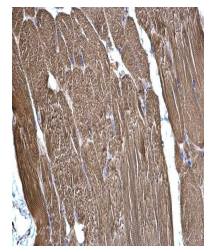
32

**Uniprot ID**
[P21912](#)
**Dilution Range**

WB: 1:500-1:3000 , IF: 1:100-1:1000 , IHC-P: 1:100-1:1000

**Expiration Date**

12 months from date of receipt.



Immunohistochemical staining of mouse mu...