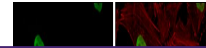

Product Datasheet

CSB antibody (orb556177)

Description

Rabbit polyclonal antibody to CSB


Species/Host

Rabbit

Reactivity

Human, Mouse, Rat

Conjugation

Unconjugated

Tested Applications

ICC, IHC-P, IP, WB

Immunogen

Recombinant protein encompassing a sequence within the center region of human CSB. The exact sequence is proprietary.

Immunofluorescence analysis of HeLa cell...

Target

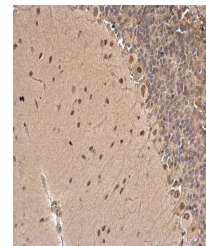
CSB

Preservatives

0.025% ProClin 300, 1XPBS (pH7), 20% Glycerol

Form/Appearance

Liquid: 1XPBS, 0.2M Tris, 0.2M Glycine, 1mM EGTA, 50% Glycerol (pH7). 0.025% ProClin 300 was added as a preservative.



Immunohistochemical staining of rat hind...

Concentration

0.4 mg/ml

Storage

Store as concentrated solution. Centrifuge briefly prior to opening vial. For short-term storage (1-2 weeks), store at 4°C. For long-term storage, aliquot and store at -20°C or below. Avoid multiple freeze-thaw cycles.

Note

For research use only

Isotype

IgG

Clonality

Polyclonal

Purity

Purified by antigen-affinity chromatography.

MW

168

Uniprot ID
[Q03468](#), [P0DP91](#)
Dilution Range

WB: 1:500-1:3000, IF: 1:100-1:1000, IHC-P: 1:100-1:1000, IP: 1:100-1:500

Expiration Date

12 months from date of receipt.



Immunohistochemical staining of mouse mu...