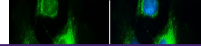

Product Datasheet

inositol polyphosphate-5-phosphatase F Antibody (orb556158)

Description

Rabbit polyclonal antibody to INPP5F


Species/Host

Rabbit

Reactivity

Human

Conjugation

Unconjugated

Tested

ICC, IHC-P, WB

Applications

Immunofluorescence analysis of HeLa cell...

Immunogen

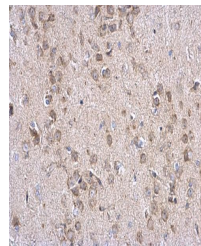
Recombinant protein encompassing a sequence within the center region of human INPP5F. The exact sequence is proprietary.

Target

INPP5F

Preservatives

0.01% Thimerosal. 0.1M Tris-Glycine (pH7), 10% Glycerol


Form/Appearance

Liquid: 0.1M Tris, 0.1M Glycine, 10% Glycerol (pH7). 0.01% Thimerosal was added as a preservative.

Immunohistochemical staining of mouse fo...

Concentration

0.79 mg/ml

Storage

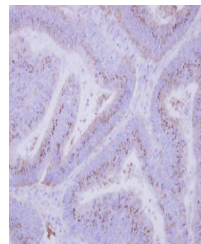
Store as concentrated solution. Centrifuge briefly prior to opening vial. For short-term storage (1-2 weeks), store at 4°C. For long-term storage, aliquot and store at -20°C or below. Avoid multiple freeze-thaw cycles.

Note

For research use only

Isotype

IgG



Immunohistochemical staining of human CO...

Clonality

Polyclonal

Purity

Purified by antigen-affinity chromatography.

MW

128

Uniprot ID
[Q9Y2H2](https://www.uniprot.org/uniprot/Q9Y2H2)
Dilution Range

WB: 1:500-1:3000 , IF: 1:100-1:1000 , IHC-P: 1:100-1:1000

Expiration Date

12 months from date of receipt.