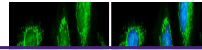

Product Datasheet

**pyruvate dehydrogenase E1 alpha 1 subunit
Antibody (orb556133)**

Description

Rabbit polyclonal antibody to Pyruvate


Species/Host

Rabbit

Reactivity

Human, Mouse, Rat, Zebrafish

Conjugation

Unconjugated

Tested Applications

ICC, IHC, IHC-P, IP, WB

Immunogen

Recombinant protein encompassing a sequence within the center region of human Pyruvate Dehydrogenase E1 alpha. The exact sequence is proprietary.

Target

Pyruvate Dehydrogenase E1 alpha

Preservatives

0.025% ProClin 300, 1XPBS (pH7), 20% Glycerol

Form/Appearance

Liquid: 1XPBS, 20% Glycerol (pH7). 0.025% ProClin 300 was added as a preservative.

Concentration

1.67 mg/ml

Storage

Store as concentrated solution. Centrifuge briefly prior to opening vial. For short-term storage (1-2 weeks), store at 4°C. For long-term storage, aliquot and store at -20°C or below. Avoid multiple freeze-thaw cycles.

Note

For research use only

Application notes

Positive control: Mouse brain , Rat brain , 293T , A431 , HeLa , HepG2

Isotype

IgG

Clonality

Polyclonal

Purity

Purified by antigen-affinity chromatography.

MW

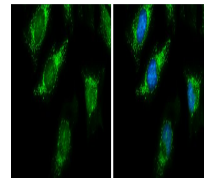
43

Uniprot ID
[P08559](https://www.uniprot.org/protein/P08559)
Dilution Range

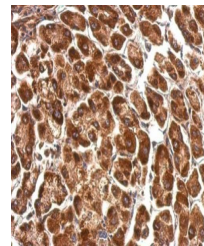
WB: 1:500-1:10000 , IF: 1:100-1:1000 , IHC-P: 1:100-1:1000 , IP: 1:100-1:500

Expiration Date

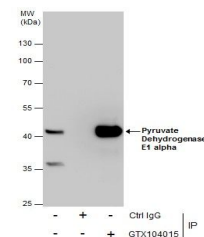
12 months from date of receipt.



Immunofluorescence analysis of HeLa cell...



Immunohistochemical staining of human he...



Immunoprecipitation analysis of HepG2 wh...