

---

## Product Datasheet

### **inositol hexakisphosphate kinase 1 Antibody (orb556128)**

**Description**

Rabbit polyclonal antibody to IP6K1


**Species/Host**

Rabbit

**Reactivity**

Human, Mouse

**Conjugation**

Unconjugated

**Tested Applications**

ICC, IHC-P, IP, WB

**Immunogen**

Recombinant protein encompassing a sequence within the center region of human IP6K1. The exact sequence is proprietary.

**Target**

IP6K1

**Preservatives**

0.025% ProClin 300, 1XPBS (pH7), 1% rAlbumin, 20% Glycerol

**Form/Appearance**

Liquid: 1XPBS, 1% rAlbumin, 20% Glycerol (pH7). 0.025% ProClin 300 was added as a preservative.

**Concentration**

0.22 mg/ml

**Storage**

Store as concentrated solution. Centrifuge briefly prior to opening vial. For short-term storage (1-2 weeks), store at 4°C. For long-term storage, aliquot and store at -20°C or below. Avoid multiple freeze-thaw cycles.

**Note**

For research use only

**Application notes**

Positive control: Jurkat, Raji, NCI-H929

**Isotype**

IgG

**Clonality**

Polyclonal

**Purity**

Affinity purified by Protein A.

**MW**

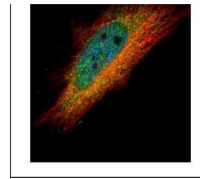
50

**Uniprot ID**
[Q92551](https://www.uniprot.org/uniprot/Q92551)
**Dilution Range**

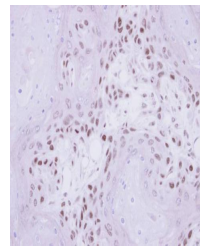
WB: 1:500-1:10000, IF: 1:100-1:1000, IHC-P: 1:100-1:1000

**Expiration Date**

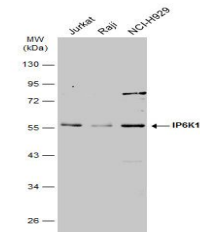
12 months from date of receipt.



Immunofluorescence analysis of HeLa cell...



Immunohistochemical staining of Ca922 xenograft...



Western blot analysis of Various whole cell lysates...