

Product Datasheet

mannose phosphate isomerase Antibody (orb556108)

Description

Rabbit polyclonal antibody to MPI


Species/Host

Rabbit

Reactivity

Human, Rat

Conjugation

Unconjugated

Tested Applications

IHC-P, WB

Immunogen

Recombinant protein encompassing a sequence within the center region of human MPI. The exact sequence is proprietary.

Target

MPI

Preservatives

0.01% Thimerosal. 0.1M Tris-Glycine (pH7), 10% Glycerol

Form/Appearance

Liquid: 0.1M Tris, 0.1M Glycine, 10% Glycerol (pH7). 0.01% Thimerosal was added as a preservative.

Concentration

1 mg/ml

Storage

Store as concentrated solution. Centrifuge briefly prior to opening vial. For short-term storage (1-2 weeks), store at 4°C. For long-term storage, aliquot and store at -20°C or below. Avoid multiple freeze-thaw cycles.

Note

For research use only

Application notes

Positive control: 293T, A431, H1299, HeLaS3, HepG2, Molt-4, Raji, PC-12, Rat2, HeLa

Isotype

IgG

Clonality

Polyclonal

Purity

Purified by antigen-affinity chromatography.

MW

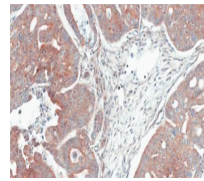
47

Uniprot ID
[P34949](https://www.uniprot.org/uniprot/P34949)
Dilution Range

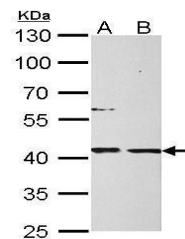
WB: 1:500-1:3000, IHC-P: 1:100-1:1000

Expiration Date

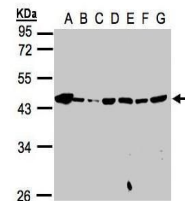
12 months from date of receipt.



Immunohistochemical staining of N87 xenograft tissue.



Western blot analysis of 293T(Lane 1), A431(Lane 2).



Western blot analysis of 293T(Lane 1), A431(Lane 2).