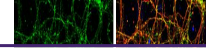

Product Datasheet

homer scaffold protein 1 Antibody (orb556086)

Description

Rabbit polyclonal antibody to Homer1


Species/Host

Rabbit

Reactivity

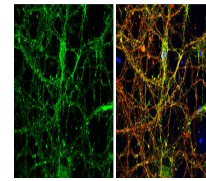
Human, Mouse, Rat

Conjugation

Unconjugated

Tested

ICC, IHC-Fr, IHC-P, IP, WB

Applications


Immunofluorescence analysis of cortical ...

Immunogen

Recombinant protein encompassing a sequence within the center region of human Homer1. The exact sequence is proprietary.

Target

Homer1

Preservatives

0.025% ProClin 300. 1XPBS (pH7), 20% Glycerol



Immunofluorescence analysis of HeLa cell...

Form/Appearance

Liquid: 1XPBS, 20% Glycerol (pH7). 0.025% ProClin 300 was added as a preservative.

Concentration

0.75 mg/ml

Storage

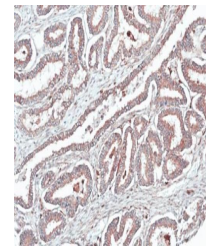
Store as concentrated solution. Centrifuge briefly prior to opening vial. For short-term storage (1-2 weeks), store at 4°C. For long-term storage, aliquot and store at -20°C or below. Avoid multiple freeze-thaw cycles.

Note

For research use only

Application notes

Positive control: U87-MG , SK-N-SH , IMR32 , SK-N-AS



Immunohistochemical staining of human ov...

Isotype

IgG

Clonality

Polyclonal

Purity

Purified by antigen-affinity chromatography.

MW

40

Uniprot ID

[Q86YM7](#)

Dilution Range

WB: 1:500-1:10000 , IF: 1:100-1:1000 , IHC-P: 1:100-1:1000 , IHC-Fr: 1:100-1:1000 , IP: 1:100-1:500

Expiration Date

12 months from date of receipt.