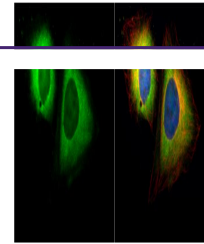


---

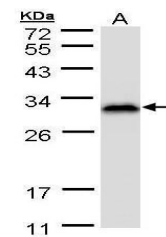
## Product Datasheet

### RanBP1 antibody (orb556079)

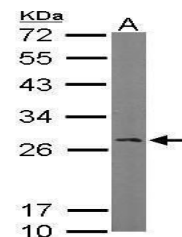
<b>Description</b>	Rabbit polyclonal antibody to RanBP1
<b>Species/Host</b>	Rabbit
<b>Reactivity</b>	Human, Mouse
<b>Conjugation</b>	Unconjugated
<b>Tested Applications</b>	ICC, WB
<b>Immunogen</b>	Recombinant protein encompassing a sequence within the center region of human RanBP1. The exact sequence is proprietary.
<b>Target</b>	RanBP1
<b>Preservatives</b>	0.01% Thimerosal. 0.1M Tris-Glycine (pH7), 10% Glycerol
<b>Form/Appearance</b>	Liquid: 0.1M Tris, 0.1M Glycine, 10% Glycerol (pH7). 0.01% Thimerosal was added as a preservative.
<b>Concentration</b>	1 mg/ml
<b>Storage</b>	Store as concentrated solution. Centrifuge briefly prior to opening vial. For short-term storage (1-2 weeks), store at 4°C. For long-term storage, aliquot and store at -20°C or below. Avoid multiple freeze-thaw cycles.
<b>Note</b>	For research use only
<b>Application notes</b>	Positive control: Mouse brain , HeLaS3 , 293T
<b>Isotype</b>	IgG
<b>Clonality</b>	Polyclonal
<b>Purity</b>	Purified by antigen-affinity chromatography.
<b>MW</b>	23
<b>Uniprot ID</b>	<a href="https://www.uniprot.org/uniprot/P43487">P43487</a>
<b>Dilution Range</b>	WB: 1:500-1:3000 , IF: 1:100-1:1000
<b>Expiration Date</b>	12 months from date of receipt.



Immunofluorescence analysis of HeLa cell...



Western blot analysis of HeLa S3 cells u...



Western blot analysis of mouse brain usi...