
Product Datasheet

CARHSP1 antibody (orb556069)

Description

Rabbit polyclonal antibody to CARHSP1


Species/Host

Rabbit

Reactivity

Human, Mouse

Conjugation

Unconjugated

Tested Applications

IHC-P, WB

Immunohistochemical staining of mouse prostate tissue.

Immunogen

Recombinant protein encompassing a sequence within the center region of human CRHSP-24. The exact sequence is proprietary.

Target

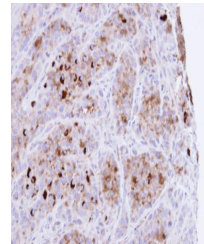
CARHSP1

Preservatives

0.01% Thimerosal. 1XPBS (pH7), 10% Glycerol

Form/Appearance

Liquid: 1XPBS, 10% Glycerol (pH7). 0.01% Thimerosal was added as a preservative.



Immunohistochemical staining of A549 xenograft tissue.

Concentration

0.71 mg/ml

Storage

Store as concentrated solution. Centrifuge briefly prior to opening vial. For short-term storage (1-2 weeks), store at 4°C. For long-term storage, aliquot and store at -20°C or below. Avoid multiple freeze-thaw cycles.

Note

For research use only

Application notes

Positive control: HepG2

Isotype

IgG

Clonality

Polyclonal

Purity

Purified by antigen-affinity chromatography.

MW

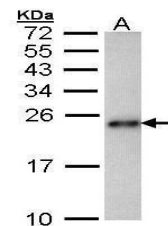
16

Uniprot ID
[Q9Y2V2](https://www.uniprot.org/entry/Q9Y2V2)
Dilution Range

WB: 1:500-1:3000 , IHC-P: 1:100-1:1000

Expiration Date

12 months from date of receipt.



Western blot analysis of Hep G2 cells.