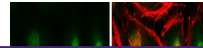

Product Datasheet

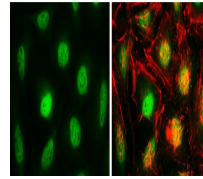
chromosome segregation 1 like Antibody (orb556066)

Description

Rabbit polyclonal antibody to CSE1L


Species/Host

Rabbit


Reactivity

Human, Mouse, Rat

Conjugation

Unconjugated

Tested

ICC, IHC-P, IP, WB

Applications

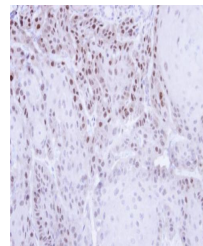
Immunofluorescence analysis of HeLa cell...

Immunogen

Recombinant protein encompassing a sequence within the center region of human CSE1L. The exact sequence is proprietary.

Target

CSE1L



Immunohistochemical staining of Cal27 Xe...

Preservatives

0.025% ProClin 300, 1XPBS (pH7), 1% rAlbumin, 20% Glycerol

Form/Appearance

Liquid: 1XPBS, 20% Glycerol (pH7). 0.025% ProClin 300 was added as a preservative.

Concentration

0.59 mg/ml

Storage

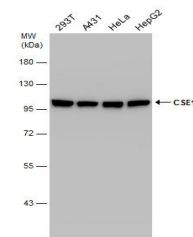
Store as concentrated solution. Centrifuge briefly prior to opening vial. For short-term storage (1-2 weeks), store at 4°C. For long-term storage, aliquot and store at -20°C or below. Avoid multiple freeze-thaw cycles.

Note

For research use only

Application notes

Positive control: NIH-3T3, JC, BCL-1, C2C12, PC-12, Rat2, 293T



Western blot analysis of Various whole c...

Isotype

IgG

Clonality

Polyclonal

Purity

Purified by antigen-affinity chromatography.

MW

110

Uniprot ID
[P55060](https://www.uniprot.org/protein/P55060)
Dilution Range

WB: 1:1000-1:20000, IF: 1:100-1:2000, IHC-P: 1:100-1:1000

Expiration Date

12 months from date of receipt.