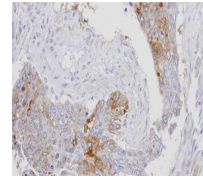
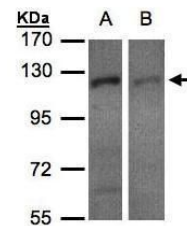

Product Datasheet

RanBP16 antibody (orb556023)

Description	Rabbit polyclonal antibody to RanBP16
Species/Host	Rabbit
Reactivity	Mouse
Conjugation	Unconjugated
Tested Applications	WB
Immunogen	Recombinant protein encompassing a sequence within the C-terminus region of human RanBP16. The exact sequence is proprietary.
Target	RanBP16
Preservatives	0.01% Thimerosal. 0.1M Tris-Glycine (pH7), 10% Glycerol
Form/Appearance	Liquid: 0.1M Tris, 0.1M Glycine, 10% Glycerol (pH7). 0.01% Thimerosal was added as a preservative.
Concentration	0.93 mg/ml
Storage	Store as concentrated solution. Centrifuge briefly prior to opening vial. For short-term storage (1-2 weeks), store at 4°C. For long-term storage, aliquot and store at -20°C or below. Avoid multiple freeze-thaw cycles.
Note	For research use only
Isotype	IgG
Clonality	Polyclonal
Purity	Purified by antigen-affinity chromatography.
MW	124
Uniprot ID	Q9UIA9
Dilution Range	WB: 1:500-1:3000 , IHC-P: 1:100-1:1000
Expiration Date	12 months from date of receipt.



Immunohistochemical staining of human lu...



Western blot analysis of H1299(Lane 1), ...