
Product Datasheet

ERH mRNA splicing and mitosis factor Antibody (orb555989)

Description

Rabbit polyclonal antibody to ERH


Species/Host

Rabbit

Reactivity

Human, Mouse, Zebrafish

Conjugation

Unconjugated

Tested

IHC, IHC-P, WB

Applications

Immunohistochemical staining of mouse fo...

Immunogen

Recombinant protein encompassing a sequence within the center region of human ERH. The exact sequence is proprietary.

Target

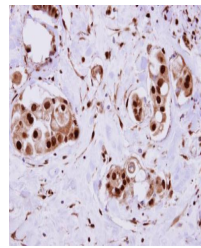
ERH

Preservatives

0.01% Thimerosal. 0.1M Tris-Glycine (pH7), 10% Glycerol

Form/Appearance

Liquid: 0.1M Tris, 0.1M Glycine, 10% Glycerol (pH7). 0.01% Thimerosal was added as a preservative.



Immunohistochemical staining of human br...

Concentration

0.79 mg/ml

Storage

Store as concentrated solution. Centrifuge briefly prior to opening vial. For short-term storage (1-2 weeks), store at 4°C. For long-term storage, aliquot and store at -20°C or below. Avoid multiple freeze-thaw cycles.

Note

For research use only

Application notes

Positive control: Mouse brain , A549 , H1299 , HCT116

Isotype

IgG

Clonality

Polyclonal

Purity

Purified by antigen-affinity chromatography.

MW

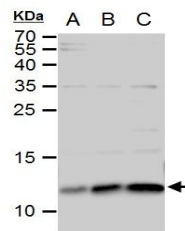
12

Uniprot ID
[P84090](https://www.uniprot.org/protein/P84090)
Dilution Range

WB: 1:500-1:3000 , IHC-P: 1:100-1:1000

Expiration Date

12 months from date of receipt.



Western blot analysis of H1299 cells(Lan...