

---

## Product Datasheet

### SGTA antibody (orb555963)

**Description**

Rabbit polyclonal antibody to SGTA

**Species/Host**

Rabbit

**Reactivity**

Human, Mouse

**Conjugation**

Unconjugated

**Tested Applications**

IHC-P, WB

**Immunogen**

Recombinant protein encompassing a sequence within the center region of human SGTA. The exact sequence is proprietary.

**Target**

SGTA

**Preservatives**

0.01% Thimerosal. 1XPBS (pH7), 20% Glycerol

**Form/Appearance**

Liquid: 1XPBS, 20% Glycerol (pH7). 0.01% Thimerosal was added as a preservative.

**Concentration**

1 mg/ml

**Storage**

Store as concentrated solution. Centrifuge briefly prior to opening vial. For short-term storage (1-2 weeks), store at 4°C. For long-term storage, aliquot and store at -20°C or below. Avoid multiple freeze-thaw cycles.

**Note**

For research use only

**Application notes**

Positive control: Mouse liver , HepG2 , Molt-4

**Isotype**

IgG

**Clonality**

Polyclonal

**Purity**

Purified by antigen-affinity chromatography.

**MW**

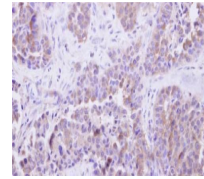
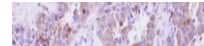
34

**Uniprot ID**
[O43765](https://www.uniprot.org/entry/O43765)
**Dilution Range**

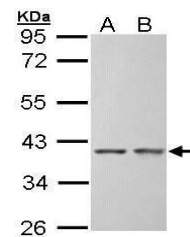
WB: 1:1000-1:10000 , IHC-P: 1:100-1:1000

**Expiration Date**

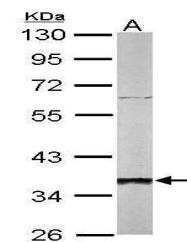
12 months from date of receipt.



Immunohistochemical staining of human liver tissue showing SGTA expression.



Western blot analysis of Hep G2(Lane 1),...



Western blot analysis of Hep G2(Lane 1),...