

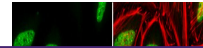
---

## Product Datasheet

### ATRX antibody (orb555946)

**Description**

Rabbit polyclonal antibody to ATRX


**Species/Host**

Rabbit

**Reactivity**

Human, Mouse, Rat

**Conjugation**

Unconjugated

**Tested**

ICC, IHC-P, IP, WB

**Applications**

Immunofluorescence analysis of HeLa cell...

**Immunogen**

Recombinant protein encompassing a sequence within the C-terminus region of human ATRX. The exact sequence is proprietary.

**Target**

ATRX

**Preservatives**

0.025% ProClin 300, 1XPBS pH 7, 1% rAlbumin, 20% Glycerol

**Form/Appearance**

Liquid: 1XPBS, 20% Glycerol (pH7). 0.025% ProClin 300 was added as a preservative.

**Concentration**

1.43 mg/ml

**Storage**

Store as concentrated solution. Centrifuge briefly prior to opening vial. For short-term storage (1-2 weeks), store at 4°C. For long-term storage, aliquot and store at -20°C or below. Avoid multiple freeze-thaw cycles.

**Note**

For research use only

**Application notes**

Positive control: NIH3T3, PC-12, Rat-2, 293T

**Isotype**

IgG

**Clonality**

Polyclonal

**Purity**

Purified by antigen-affinity chromatography.

**MW**

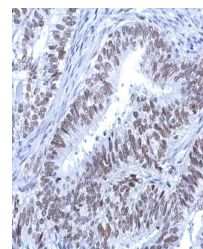
283

**Uniprot ID**
[P46100](https://www.uniprot.org/protein/P46100)
**Dilution Range**

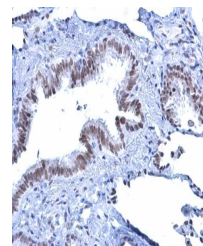
WB: 1:500-1:3000, IF: 1:100-1:1000, IHC-P: 1:100-1:1000, IP: 1:100-1:500

**Expiration Date**

12 months from date of receipt.



Immunohistochemical staining of human en...



Immunohistochemical staining of human lu...