
Product Datasheet

Filamin B antibody (orb555942)

Description

Rabbit polyclonal antibody to Filamin B

Species/Host

Rabbit

Reactivity

Human, Mouse

Conjugation

Unconjugated

Tested Applications

ICC, IHC-P, WB

Immunogen

Recombinant protein encompassing a sequence within the N-terminus region of human Filamin B. The exact sequence is proprietary.

Target

Filamin B

Preservatives

0.01% Thimerosal. 1XPBS (pH7), 1% rAlbumin, 20% Glycerol

Form/Appearance

Liquid: 1XPBS, 1% rAlbumin, 20% Glycerol (pH7). 0.01% Thimerosal was added as a preservative.

Concentration

10 mg/ml

Storage

Store as concentrated solution. Centrifuge briefly prior to opening vial. For short-term storage (1-2 weeks), store at 4°C. For long-term storage, aliquot and store at -20°C or below. Avoid multiple freeze-thaw cycles.

Note

For research use only

Application notes

Positive control: U87-MG , NIH-3T3 , 293T , A431 , HeLa , HepG2

Isotype

IgG

Clonality

Polyclonal

Purity

Affinity purified by Protein A.

MW

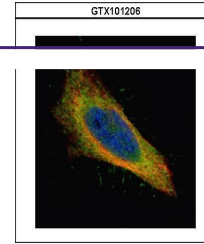
278

Uniprot ID
[O75369](https://www.uniprot.org/uniprot/O75369)
Dilution Range

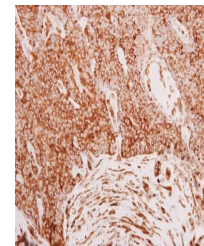
WB: 1:500-1:10000 , IF: 1:100-1:1000 , IHC-P: 1:100-1:1000

Expiration Date

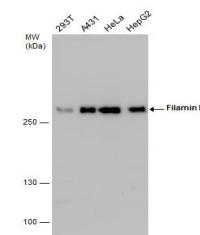
12 months from date of receipt.



Immunofluorescence analysis of HeLa cell...



Immunohistochemical staining of human lu...



Western blot analysis of Various whole c...