

## Product Datasheet

### WT1 transcription factor Antibody (orb555926)

**Description**

Rabbit polyclonal antibody to Wilms Tumor 1


**Species/Host**

Rabbit

**Reactivity**

Mouse, Rat, Zebrafish

**Conjugation**

Unconjugated

**Tested**

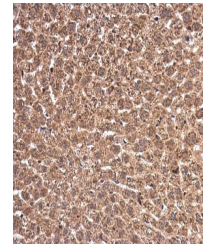
IHC-P, WB

**Applications**

Immunohistochemical staining of rat test...

**Immunogen**

Recombinant protein encompassing a sequence within the center region of human Wilms Tumor 1. The exact sequence is proprietary.


**Target**

Wilms Tumor 1

**Preservatives**

0.025% ProClin 300. 1XPBS (pH7), 20% Glycerol

**Form/Appearance**

Liquid: 1XPBS, 20% Glycerol (pH7). 0.025% ProClin 300 was added as a preservative.

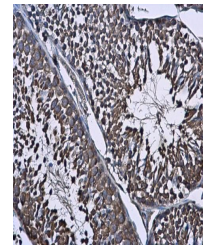
Immunohistochemical staining of mouse li...

**Concentration**

0.85 mg/ml

**Storage**

Store as concentrated solution. Centrifuge briefly prior to opening vial. For short-term storage (1-2 weeks), store at 4°C. For long-term storage, aliquot and store at -20°C or below. Avoid multiple freeze-thaw cycles.


**Note**

For research use only

Immunohistochemical staining of mouse te...

**Isotype**

IgG

**Clonality**

Polyclonal

**Purity**

Purified by antigen-affinity chromatography.

**MW**

49

**Uniprot ID**
[P19544](#)
**Dilution Range**

IHC-P: 1:100-1:1000

**Expiration Date**

12 months from date of receipt.