
Product Datasheet

ERG antibody (orb555897)

Description

Rabbit polyclonal antibody to ERG

Species/Host

Rabbit

Reactivity

Human, Mouse

Conjugation

Unconjugated

Tested Applications

ICC, WB

Immunogen

Carrier-protein conjugated synthetic peptide encompassing a sequence within the C-terminus region of human ERG. The exact sequence is proprietary.

Target

ERG

Preservatives

0.01% Thimerosal. 1XPBS (pH7), 20% Glycerol

Form/Appearance

Liquid: 1XPBS, 20% Glycerol (pH7). 0.01% Thimerosal was added as a preservative.

Concentration

1 mg/ml

Storage

Store as concentrated solution. Centrifuge briefly prior to opening vial. For short-term storage (1-2 weeks), store at 4°C. For long-term storage, aliquot and store at -20°C or below. Avoid multiple freeze-thaw cycles.

Note

For research use only

Application notes

Positive control: mouse brain , H1299

Isotype

IgG

Clonality

Polyclonal

Purity

Affinity purified by protein A.

MW

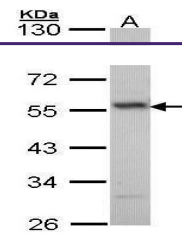
55

Uniprot ID
[P11308](#)
Dilution Range

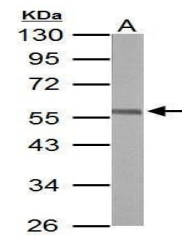
WB: 1:1000-1:10000 , IF: 1:100-1:1000

Expiration Date

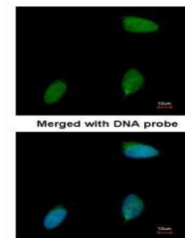
12 months from date of receipt.



Western blot analysis of H1299 cells usi...



Western blot analysis of mouse brain usi...



Immunofluorescence analysis of human pan...