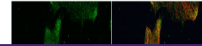

Product Datasheet

EML1 antibody (orb555895)

Description

Rabbit polyclonal antibody to EML1


Species/Host

Rabbit

Reactivity

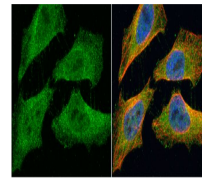
Human, Monkey, Mouse, Rat

Conjugation

Unconjugated

Tested

ICC, IHC-P, WB

Applications


Immunofluorescence analysis of HeLa cell...

Immunogen

Carrier-protein conjugated synthetic peptide encompassing a sequence within the C-terminus region of human EML1. The exact sequence is proprietary.

Target

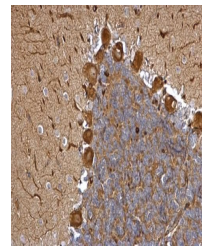
EML1

Preservatives

0.01% Thimerosal. 1XPBS (pH7), 20% Glycerol

Form/Appearance

Liquid: 1XPBS, 20% Glycerol (pH7). 0.01% Thimerosal was added as a preservative.



Immunohistochemical staining of rat hind...

Concentration

1 mg/ml

Storage

Store as concentrated solution. Centrifuge briefly prior to opening vial. For short-term storage (1-2 weeks), store at 4°C. For long-term storage, aliquot and store at -20°C or below. Avoid multiple freeze-thaw cycles.

Note

For research use only

Application notes

Positive control: H1299 , NIH-3T3

Isotype

IgG

Clonality

Polyclonal

Purity

Purified by antigen-affinity chromatography.

MW

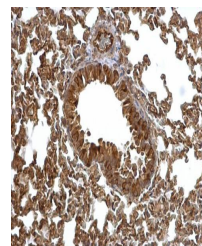
90

Uniprot ID
[O00423](https://www.uniprot.org/entry/O00423)
Dilution Range

WB: 1:500-1:3000 , IF: 1:100-1:1000 , IHC-P: 1:100-1:1000

Expiration Date

12 months from date of receipt.



Immunohistochemical staining of mouse fo...