

---

## Product Datasheet

### dedicator of cytokinesis 1 Antibody (orb555892)

**Description**

Rabbit polyclonal antibody to DOCK1

**Species/Host**

Rabbit

**Reactivity**

Human, Mouse, Rat

**Conjugation**

Unconjugated

**Tested Applications**

ICC, IHC-P, WB

**Immunogen**

Carrier-protein conjugated synthetic peptide encompassing a sequence within the C-terminus region of human DOCK1. The exact sequence is proprietary.

**Target**

DOCK1

**Preservatives**

0.01% Thimerosal, 0.1M Tris, 0.1M Glycine (pH7), 20% Glycerol

**Form/Appearance**

Liquid: 1XPBS, 20% Glycerol (pH7). 0.01% Thimerosal was added as a preservative.

**Concentration**

1 mg/ml

**Storage**

Store as concentrated solution. Centrifuge briefly prior to opening vial. For short-term storage (1-2 weeks), store at 4°C. For long-term storage, aliquot and store at -20°C or below. Avoid multiple freeze-thaw cycles.

**Note**

For research use only

**Application notes**

Positive control: 293T, HeLaS3, C8D30, NIH-3T3, Raw264.7, C2C12

**Isotype**

IgG

**Clonality**

Polyclonal

**Purity**

Purified by antigen-affinity chromatography.

**MW**

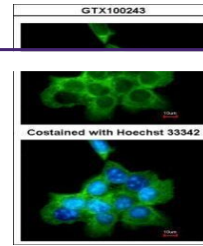
215

**Uniprot ID**
[Q14185](https://www.uniprot.org/protein/Q14185)
**Dilution Range**

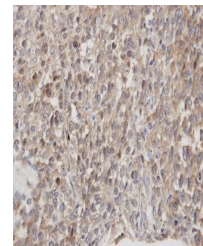
WB: 1:500-1:3000, IF: 1:100-1:1000, IHC-P: 1:100-1:1000

**Expiration Date**

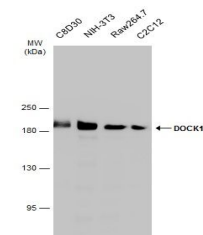
12 months from date of receipt.



Immunofluorescence analysis of A431 cell...



Immunohistochemical staining of human lu...



Western blot analysis of Various whole c...