

---

## Product Datasheet

### adrenoceptor alpha 1A Antibody (orb555887)

**Description**

Rabbit polyclonal antibody to alpha 1a


**Species/Host**

Rabbit

**Reactivity**

Feline, Human, Mouse, Rat

**Conjugation**

Unconjugated

**Tested Applications**

ICC, IHC-P, WB

**Immunogen**

Carrier-protein conjugated synthetic peptide encompassing a sequence within the center region of human alpha 1a Adrenergic Receptor. The exact sequence is proprietary.

**Target**

alpha 1a Adrenergic Receptor

**Preservatives**

0.01% Thimerosal. 1XPBS (pH7), 20% Glycerol

**Form/Appearance**

Liquid: 1XPBS, 20% Glycerol (pH7). 0.01% Thimerosal was added as a preservative.

**Concentration**

1 mg/ml

**Storage**

Store as concentrated solution. Centrifuge briefly prior to opening vial. For short-term storage (1-2 weeks), store at 4°C. For long-term storage, aliquot and store at -20°C or below. Avoid multiple freeze-thaw cycles.

**Note**

For research use only

**Application notes**

Positive control: Raji , Jurkat , Raji , NCI-H929

**Isotype**

IgG

**Clonality**

Polyclonal

**Purity**

Purified by antigen-affinity chromatography.

**MW**

51

**Uniprot ID**
[P35348](#)
**Dilution Range**

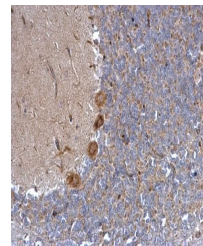
WB: 1:500-1:3000 , IF: 1:100-1:1000 , IHC-P: 1:100-1:1000

**Expiration Date**

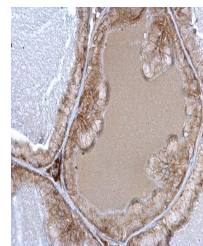
12 months from date of receipt.



Immunofluorescence analysis of Hep3B cel...



Immunohistochemical staining of rat hind...



Immunohistochemical staining of mouse pr...