
Product Datasheet

ERCC8 antibody (orb555880)

Description

Rabbit polyclonal antibody to ERCC8


Species/Host

Rabbit

Reactivity

Human, Mouse, Rat

Conjugation

Unconjugated

Tested Applications

ICC, WB

Immunogen

Recombinant protein encompassing a sequence within the center region of human ERCC8. The exact sequence is proprietary.

Target

ERCC8

Preservatives

0.01% Thimerosal. 0.1M Tris-Glycine (pH7), 10% Glycerol

Form/Appearance

Liquid: 0.1M Tris, 0.1M Glycine, 10% Glycerol (pH7). 0.01% Thimerosal was added as a preservative.

Concentration

5.39 mg/ml

Storage

Store as concentrated solution. Centrifuge briefly prior to opening vial. For short-term storage (1-2 weeks), store at 4°C. For long-term storage, aliquot and store at -20°C or below. Avoid multiple freeze-thaw cycles.

Note

For research use only

Application notes

Positive control: Molt-4 , C8D30 , Rat2

Isotype

IgG

Clonality

Polyclonal

Purity

Affinity purified by Protein A.

MW

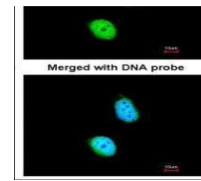
44

Uniprot ID
[Q13216](https://www.uniprot.org/uniprot/Q13216)
Dilution Range

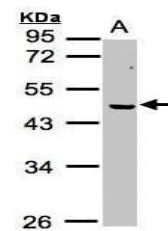
WB: 1:500-1:3000 , IF: 1:100-1:1000

Expiration Date

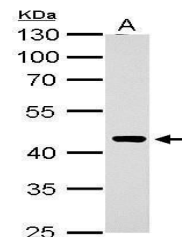
12 months from date of receipt.



Immunofluorescence analysis of HeLa cell...



Western blot analysis of MOLT4 cells usi...



Western blot analysis of Rat2 whole cell...