

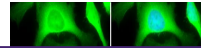
---

## Product Datasheet

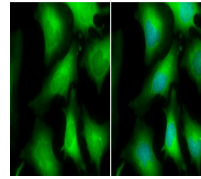
**glyceraldehyde-3-phosphate dehydrogenase  
Antibody (orb555879)**

**Description**

Rabbit polyclonal antibody to GAPDH


**Species/Host**

Rabbit


**Reactivity**

Bacteria, Bovine, Canine, Drosophila, E. coli, Fish, Gallus, Hamster, Human, Insect, Mammal, Monkey, Mouse, Other, Plant, Porcine, Rabbit, Rat, Yeast, Zebrafish

**Conjugation**

Unconjugated

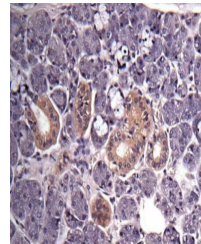
Immunofluorescence analysis of HeLa cell...

**Tested Applications**

ICC, IHC-P, IP, WB

**Immunogen**

Recombinant protein encompassing a sequence within the center region of human GAPDH. The exact sequence is proprietary.


**Target**

GAPDH

**Preservatives**

0.025% ProClin 300, 1XPBS, 1% rAlbumin, 20% Glycerol (pH7)

Immunohistochemical staining of human sa...

**Form/Appearance**

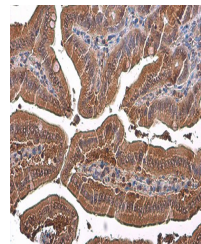
Liquid: 1XPBS, 20% Glycerol (pH7). 0.025% ProClin 300 was added as a preservative.

**Concentration**

0.69 mg/ml

**Storage**

Store as concentrated solution. Centrifuge briefly prior to opening vial. For short-term storage (1-2 weeks), store at 4°C. For long-term storage, aliquot and store at -20°C or below. Avoid multiple freeze-thaw cycles.



Immunohistochemical staining of mouse in...

**Note**

For research use only

**Application notes**

Positive control: PC-12, Rat2, Neuro 2A, C8D30, NIH-3T3, Raw264.7, C2C12, E.coli M15

**Isotype**

IgG

**Clonality**

Polyclonal

**Purity**

Purified by antigen-affinity chromatography.

**MW**

36

**Uniprot ID**
**P04406**
**Dilution Range**

WB: 1:5000-1:100000, IF: 1:100-1:1000, IHC-P: 1:100-1:1000, IP: 1:100-1:500