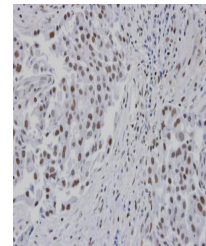


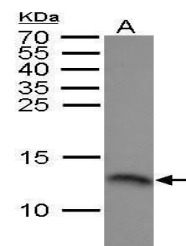
## Product Datasheet

### replication protein A3 Antibody (orb555876)

<b>Description</b>	Rabbit polyclonal antibody to RPA14
<b>Species/Host</b>	Rabbit
<b>Reactivity</b>	Human
<b>Conjugation</b>	Unconjugated
<b>Tested Applications</b>	IHC-P, WB
<b>Immunogen</b>	Full length human RPA14 Recombinant protein.
<b>Target</b>	RPA14
<b>Preservatives</b>	0.01% Thimerosal. 1XPBS (pH7), 20% Glycerol
<b>Form/Appearance</b>	Liquid: 1XPBS, 20% Glycerol (pH7). 0.01% Thimerosal was added as a preservative.
<b>Concentration</b>	1 mg/ml
<b>Storage</b>	Store as concentrated solution. Centrifuge briefly prior to opening vial. For short-term storage (1-2 weeks), store at 4°C. For long-term storage, aliquot and store at -20°C or below. Avoid multiple freeze-thaw cycles.
<b>Note</b>	For research use only
<b>Isotype</b>	IgG
<b>Clonality</b>	Polyclonal
<b>Purity</b>	Purified by antigen-affinity chromatography.
<b>MW</b>	14
<b>Uniprot ID</b>	<b>P35244</b>
<b>Dilution Range</b>	WB: 1:500-1:3000 , IHC-P: 1:100-1:1000
<b>Expiration Date</b>	12 months from date of receipt.



Immunohistochemical staining of human lu...



Western blot analysis of 293T whole cell...