
Product Datasheet

Interferon gamma antibody (orb555872)

Description

Rabbit polyclonal antibody to Interferon gamma

Species/Host

Rabbit

Reactivity

Human, Mouse, Rat

Conjugation

Unconjugated

Tested Applications

FACS, ICC, IHC, IHC-Fr, IHC-P, WB

Immunogen

Carrier-protein conjugated synthetic peptide encompassing a sequence within the C-terminus region of human Iba1. The exact sequence is proprietary.

Target

Interferon gamma

Preservatives

0.025% ProClin 300. 1XPBS (pH7), 1% rAlbumin, 20% Glycerol

Form/Appearance

Liquid: 1XPBS, 20% Glycerol (pH7). 0.025% ProClin 300 was added as a preservative.

Concentration

Batch dependent

Storage

Store as concentrated solution. Centrifuge briefly prior to opening vial. For short-term storage (1-2 weeks), store at 4°C. For long-term storage, aliquot and store at -20°C or below. Avoid multiple freeze-thaw cycles.

Note

For research use only

Application notes

Positive control: mouse liver , rat liver

Isotype

IgG

Clonality

Polyclonal

Purity

Purified by antigen-affinity chromatography.

MW

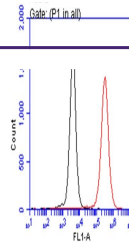
17

Uniprot ID
P55008
Dilution Range

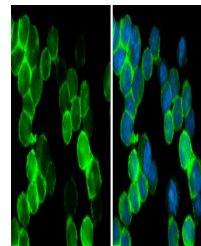
WB: 1:500-1:10000 , IF: 1:100-1:1000 , IHC-P: 1:100-1:1000 , IHC-Fr: 1:100-1:1000 , FACS: 1:50-1:200

Expiration Date

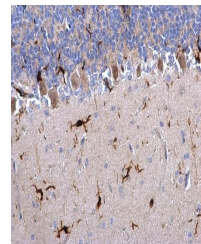
12 months from date of receipt.



Flow cytometric analysis of THP-1 cell u...



Immunofluorescence analysis of THP-1 cel...



Immunohistochemical staining of rat hind...