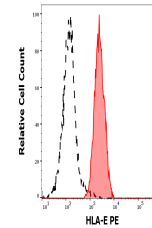


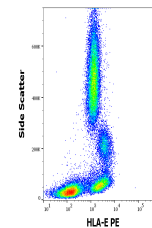
Product Datasheet

HLA-E antibody (PE) (orb555859)

Description	Mouse monoclonal antibody against HLA-E conjugated to PE
Reactivity	Human
Conjugation	PE
Tested Applications	FC
Immunogen	recombinant human HLA-E
Target	HLA-E
Preservatives	Stabilizing phosphate buffered saline (PBS), pH 7.4, 15 mM sodium azide
Concentration	0.1 mg/ml
Storage	Store at 2-8°C. Protect from prolonged exposure to light. Do not freeze.
Note	For research use only
Application notes	Flow cytometry: Recommended dilution: 1-5 µg/ml.
Isotype	Mouse IgG1
Clonality	Monoclonal
Purity	Purified antibody is conjugated with R-phycoerythrin (PE) under optimum conditions. Unconjugated antibody and free fluorochrome are removed by size-exclusion chromatography.
Uniprot ID	P13747
Entrez	3133
Dilution Range	Flow cytometry: Recommended dilution: 1-5 µg/ml.
Expiration Date	12 months from date of receipt.



Separation of human lymphocytes (red-fil...



Flow cytometry surface staining pattern ...